

Around Town

Some exciting things are brewing around Town.
Here's a quick breakdown of some things to expect:

Golden Beach Beefs up Security in Anticipation of Elections

The Golden Beach Police Department is not taking any chances with security as the United States enters one of the most volatile elections in history. Additional staffing has been arranged to handle any possible civil unrest surrounding the election.



< NOTICE

2021 is an election year for Town Council positions.

If you are interested in running for a position on the Golden Beach Town Council please contact Town Clerk Lissette Perez in Town Hall at 305.932.0744 or via email at lperez@goldenbeach.us.

Qualifying Handbooks will be available in the coming weeks; please contact the Town Clerk's office for details.

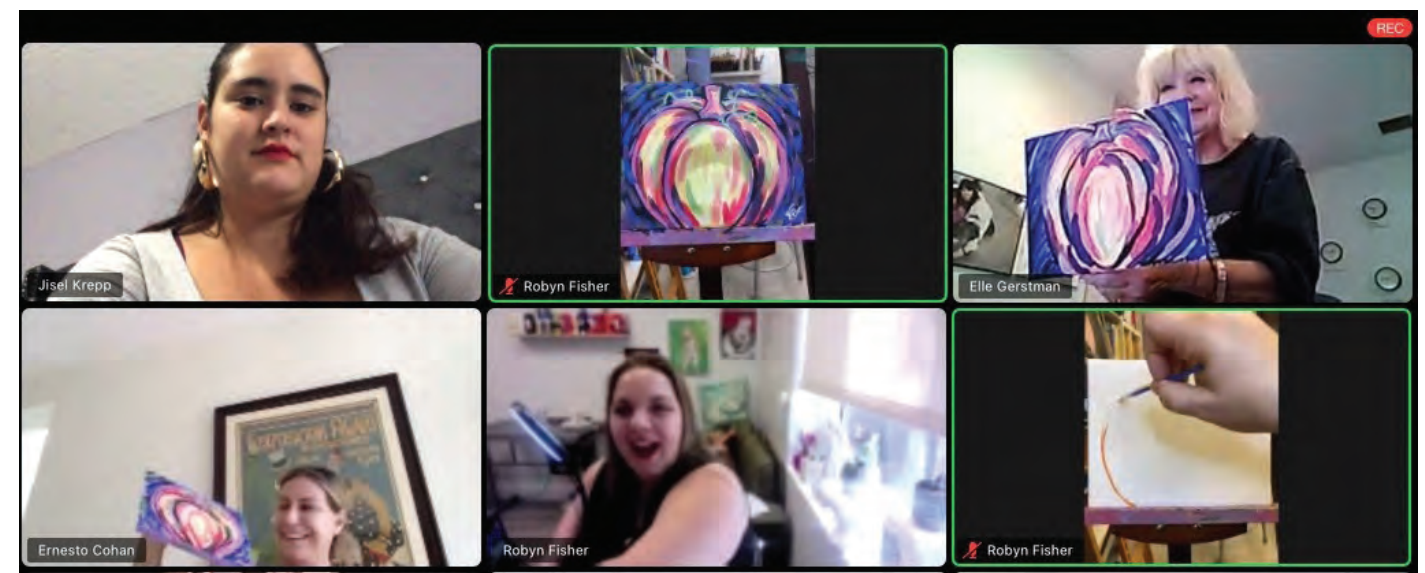
Qualifying Period: 12/28/2020 to 1/4/2021



< King Tides Continue

Autumn months bring tides that are higher than normal and can cause localized flooding. Areas prone to flooding will see increased standing water during these days. Center Island continues to be an area that is especially affected by King Tides. The Town is moving forward with construction of a pump station to alleviate those issues.

Projected upcoming King Tide dates include: November 13 – November 18, 2020. Expect possible temporary flood conditions particularly during these dates.



Social Programming Returns to Golden Beach! ^

While it may be some time until we can all gather safely to socialize in person, the Town has begun rolling out social programming with social distancing in mind. We hosted our first virtual painting class via ZOOM where each participant was delivered their own special painting care package. The painters were able to follow along with an instructor in real time and create a masterpiece from the comfort of their own home! Fun stuff!

Our Tennis Clinics will return, but with more intimate class sizes, offering a more personal experience with our tennis pros and also respecting social distancing guidelines. Shrinking class sizes doesn't mean less people will have a chance to join the fun. To compensate for smaller class sizes the Town will offer clinics more frequently, keep in mind in order to serve as many residents as possible the Town may limit how many clinics a resident may join during a season.

HALLOWEEN 2020

THE TOWN WANTS YOU TO HAVE A SPOOKY-YET-SAFE HALLOWEEN
HERE ARE SOME INITIATIVES THE TOWN IS DOING TO KEEP YOU SAFE.



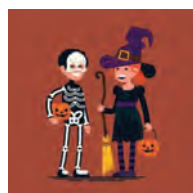
No door-to-door Trick or Treating, to minimize risk of touch transmission of COVID-19 and to uphold social distancing measures.



Treats for all! We'll be sending special Halloween treats to all homes. Also, if you have trick-or-treat age kids at home, ask for our special Trick-or-Treat bags! Email jkrepp@goldenbeach.us to request Trick-or-Treat bags.



No gatherings of **more than 10 people**.



Join our **online Halloween costume contest**. Residents of all ages can snap a photo of their costumes for a chance at some awesome prizes! You also may be featured in the Town Magazine! Email mglidden@goldenbeach.us with a photo of you in your Halloween costume to enter.

THE TOWN OF GOLDEN BEACH WISHES YOU A SAFE AND HAPPY HALLOWEEN!

GUESS WHO? V

Do you recognize this familiar face in Town? This flashback photo comes from a long term Golden Beach Resident, though we won't tell you exactly how many years ago this photo was taken. She can often be seen at Town events or teeing off at the local golf courses. It's none other than Alene Fishbein! She sent in this fun flashback photo! If you would like to have one of your blast-from-the-past photos featuring in an upcoming issue, send it to me at mglidden@goldenbeach.us and you just might see yourself in the Golden Beach Magazine!





FLOODING IN TOWN: WHAT'S BEING DONE?

Golden Beach is a barrier island community, occasional flooding is to be expected. But we are not blind to the fact that sea level rise is real, and the Town is taking real actions to ensure our community can rise against it. It is important to realize sea level rise is not exclusive to Golden Beach, or even South Florida for that matter, but the high extent of mitigating actions to combat sea level rise taken by the Town, is what makes Golden Beach exceptional.

WHY ARE WE SEEING FLOODING?

The Town has several pumps to alleviate flooding, so why was there water in the streets? The answer is two-fold:

- Even though all six pumps in Town are fully functioning, if they are **inundated with water** it does take time for them to fully process the water. In events where rainfall is particularly heavy and/or continues over an extended period, pumps will need additional time to clear the water. After a heavy storm, streets are usually drained within 40 minutes.
- **Debris can block entrances to pumps.** Mulch or lawn clippings that have migrated due to heavy rainfall can collect in drains, causing a diminished draining effect.
- **King Tides and Flooding:** Outfalls are designed to provide rainwater a route to escape our streets during heavy rains. These same outfalls can allow water to flow back into Town during high-water episodes. King Tides bring higher water levels in the intracoastal waterways, that means the outfalls that usually guide storm water out of the streets can actually allow water to backwash into the streets. The Town Council has approved the installation of flap gates to help prevent water from seeping up from outfalls. The Town of Golden Beach has a pump system that is more advanced than many other communities in the area. Most communities still rely solely on gravity based drainage systems, while Golden Beach uses a mix of pumps and gravity drains. This combination gives a more robust way to combat ground water and water from storms.

FLOODING CONCERNS BY ZONE

NEAR THE STRAND/CENTER ISLAND:

- A **new catch basin** will be installed north of the intersection of The Strand and Golden Beach Drive, which will also help ease flooding.
- Center Island continues to be an area that is especially affected by King Tides. The Town is currently working to have a pump installed that will service the Center Island area of Town.

NEAR SOUTH ISLAND/NORTH ISLAND:

- South and North Island were originally developed at a higher elevation than Center Island. They are less likely to experience flooding, though during periods of excessive rains or during King Tides these islands may see intermittent flooding.
- The area around the North Island Bridge is currently being explored as an area of opportunity for hardening against flooding.
- North Park and South Park are currently on french drain systems; pumps could be added to these sites in the future at a low cost.
- In flooding events the Town has a standard policy in place to open the North & South Gates to afford Residents alternate routes. The South Gate opens for entrance and exiting, and the North Gate opens for exiting only. The Town is researching new ways to keep Residents informed with up to the minute updates, even during holidays and overnight hours.

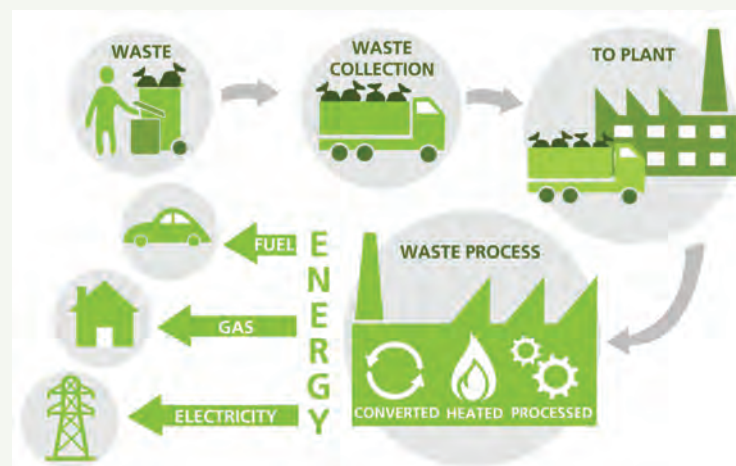
TWEDDLE PARK:

- Though certain areas of Tweddle Park currently experience ground saturation, the new Civic Center project includes pump systems that will keep the surrounding grounds drier for years to come.

HOW CAN RESIDENTS HELP PROTECT THEIR PROPERTIES?

- **Inadequate Sea Walls** can allow water intrusion. Inspect your seawall for cracks, gaps, and height breaches (where water flows over the top of your seawall). The Town has already begun contacting homeowners whose properties are showing signs of inadequate seawalls. At press time, 43 letters had already been sent to homeowners in Town letting them know that their property may have issues with compliance. Residents will have until February 2021 to address issues; afterwards the Town will explore enforcement measures with the Town Attorney.
- The Town is also investigating **grading issues** in Town. The Town's Code of Ordinances requires homeowners to maintain the elevation of their property. Over time, properties may need supplemental fill to maintain their elevation and compaction rate, in order to prevent ground saturation from causing ponding in low-lying areas.
- New homes in Town are encouraged to **surpass the current required five-foot seawall height** whenever possible. A six-foot sea wall offers better protection and in the long run is much more cost-effective than paying to retrofit or replace an inadequate seawall.
- New homes in Town are required to be built with **deep well systems**. Deep well systems push excess water down into what is known as the "boulder zone" in the aquifer deep underground. Once the water is sent there it is trapped and unlikely to make its way back to the surface.
- **What about areas of Golden Beach where the Town is responsible for seawalls?** The Town is responsible for maintaining seawalls along the three bridges, as well as along Terracina Park, Massini Park and at The Strand Boat Dock. The seawalls at these sites exceed current requirements and measure between 8' and 9'. The Town also regularly inspects these areas and performs maintenance as needed.

TURNING WASTE TO ENERGY



The Town's waste management initiative moves away from conventional recycling to Waste-to-Energy (WTE) production. Residents will no longer need to sort (or even separate) recyclables from their other household garbage. With WTE all items are used to create energy, below are specifics on the process, which were detailed in the City of Fort Lauderdale's "Green Your Routine" initiative; the Town of Golden Beach is conducting a similar method in regards to waste management. We've included information from the City of Fort Lauderdale below.

Waste-to-energy is the process of burning waste to produce electricity. A waste-to-energy facility

(WTE) takes in municipal solid waste, puts it through a combustion process and generates electricity to be used within its own community. According to the Florida Department of Environmental Protection (FDEP) "Florida has grown from having one small WTE plant in 1982 to 11 operating facilities as of 2011. [And], Florida has established the largest capacity to burn MSW of any state in the country."

WTE standards can be found in the Florida Administrative Code, Chapter 62-702.

There are two waste-to-energy plants in Broward County capable of processing 4,500 tons of waste per day. The City of Fort Lauderdale's municipal solid waste (garbage) is processed at these facilities where it is used to produce electricity.

HOW DOES IT WORK?

Garbage is collected and the trucks bring it directly to the WTE plants. The trucks are weighed, and the contents are tipped into a concrete storage pit. The entire process takes place indoors to control dust from entering the atmosphere, and to ensure that odors are not apparent to the surrounding community. Giant cranes move and mix the waste, and extract bulky items that are too large for the furnace. The cranes then feed the waste into the furnace, which burns at over 1800 degrees Fahrenheit.

The waste moves along a conveyor system of metal grates. Gas produced from the combustion are carried up from the grates through boiler tubes to produce steam. The gas goes from the boiler to a scrubber where they are mixed with a mist of water and lime. As it cools, the gas undergoes a chemical reaction which neutralizes acids and produces particles that can be collected by a "baghouse" filtering system. Finally, the cleaned gas is vented through a stack that rises 200 feet above the ground.

The ash that is a by-product of the WTE process is trolled for metals that can be recycled. The remaining ash is landfilled in special areas called monofills. Like other landfills, monofills have liners to prevent groundwater contamination, and the liquid captured is either used inside the WTE plant or sent for sewage treatment.

MORE INFORMATION

The U.S. EPA offers a range of information about WTE. Visit their Basic Information webpage to learn about the history and economics of WTE and to get more information about how it works and how it is regulated in the United States. There are 86 WTE facilities in the United States with the capacity to generate over 2,700 megawatts of electricity per year from 28 millions tons of waste. To locate Florida's WTE facilities and learn more about the process and regulations, visit the EPA's WTE directory webpage.

Additional reading at:

<https://www.epa.gov/facts-and-figures-about-materials-waste-and-recycling/advancing-sustainable-materials-management-0>

VIA FLORIDA DEPARTMENT OF HEALTH: HEALTH OFFICIALS ISSUE MOSQUITO-BORNE ILLNESSES ALERT

**ADDITIONAL HUMAN CASES OF WEST NILE INFECTION CONFIRMED
DO YOUR PART TO PROTECT YOURSELF AND OTHERS FROM MOSQUITOS**

DRAIN

- Drain standing water to stop mosquitoes from multiplying.
- Drain water from garbage cans, house gutters, buckets, pool covers, coolers, toys, flowerpots, or any other containers where sprinkler or rainwater has collected.
- Discard old tires, drums, bottles, cans, pots and pans, broken appliances, and other items that aren't being used.
- Empty and clean birdbaths and pet's water bowls at least once or twice a week
- Protect boats and vehicles from rain with tarps that don't accumulate water.
- Maintain swimming pools in good condition and appropriately chlorinated. Empty plastic swimming pools when not in use.

COVER

- Cover skin with clothing or repellent.
- Clothing – Wear shoes, socks, and long pants and long-sleeves. This type of protection may be necessary for people who must work in areas where mosquitoes are present.
- Repellent – Apply mosquito repellent to bare skin and clothing.
- Always use repellents according to the label. Repellents with DEET, picaridin, oil of lemon eucalyptus, para-menthane-diol, and IR3535 are effective.
- Use mosquito netting to protect children younger than 2 months old.
- Cover doors and windows with screens to keep mosquitoes out of your house.
- Repair broken screening on windows, doors, porches, and patios.

DID YOU KNOW? YOU CAN CALL 311 TO REPORT MOSQUITOES OR REQUEST A MOSQUITO INSPECTION

Continued on Page 24

TIPS ON REPELLENT USE

- Always read label directions carefully for the approved usage before you apply a repellent. Some repellents are not suitable for children.
- Products with concentrations of up to 30 percent DEET (N, N-diethyl-m-toluamide) are generally recommended. Other U.S. Environmental Protection Agency-approved repellents contain picaridin, oil of lemon eucalyptus, para-menthane-diol, IR3535, or 2-undecanone. These products are generally available at local pharmacies. Look for active ingredients to be listed on the product label.
- Apply insect repellent to exposed skin, or onto clothing, but not under clothing.
- In protecting children, read label instructions to be sure the repellent is age-appropriate. According to the Centers for Disease Control and Prevention (CDC), mosquito repellents containing oil of lemon eucalyptus and para-menthane-diol should not be used on children under the age of three years. DEET is not recommended on children younger than two months old.
- Avoid applying repellents to the hands of children. Adults should apply repellent first to their own hands and then transfer it to the child's skin and clothing.
- If additional protection is necessary, apply a permethrin repellent directly to your clothing. Again, always follow the manufacturer's directions.



Vote by Mail drop box: ✓

Did you know that you can drop off your Vote-by-Mail ballot at any Early Voting location? View hours and locations of secure ballot drop boxes today. www.miamidade.gov/elections/library/2020-general-early-voting-schedule.pdf

EARLY VOTING SCHEDULE:

Early Voting for the November 3, 2020 General Election is

underway at 33 locations around @MiamiDadeCounty. Find Early Voting locations and hours. www.miamidade.gov/elections/library/2020-general-early-voting-schedule.pdf

VOTER REGISTRATION STATUS AND PRECINCT/POLLING PLACE LOCATION:

Did you know that you can check your voter registration status, find your Election Day voting precinct, and view your customized Sample Ballot online? Learn more today. www.miamidade.gov/global/service.page?Mduid_service=ser151187731708822

home decor

weddings

elopements

intimate dinners

holiday celebrations

Floral Art

everyday

email: hello@oliflor.com
678-852-7002
www.oliflor.com
Instagram: [@oli.flor](https://www.instagram.com/oli.flor)

The TrObi Agency
Commercial Lending Options

Travis Fisher
305.440.8484 Travis@thetrobiagency.com

SBA, Bank Rate Loans, Bridge, Construction,
Direct Lending, Private & Hard Money

All 50 States & the Caribbean

Rates starting in the 3's

Efficient, Transparent & Quick Turn Times



THINK OUTSIDE THE BOX AND INSIDE THE BUBBLE

RENTAL OF TRANSPARENT STRUCTURES FOR
PERMANENT OR TEMPORARY INSTALLATIONS
Events – Tradeshows – Rooftops – Retail Stores –
Sales Offices – WindWalls

Main 305.440.5412 • Direct 305.582.0222
270 NW 23st, Miami Fl. 33127 • MADE IN THE USA
richard@popupeventsgroup.com



Sue & Barry Honowitz

Golden Beach Residents #1 in Golden Beach Sales
Luxury Waterfront Specialists

RUSTY STEIN & CO

The Dream Team, Buying or Selling... We make your dreams come true!



**Nobody Knows Golden Beach
Better or Cares More!**

**There is no Substitute for
Experience. Expect Success!**



GOLDEN BEACH RESIDENT SINCE 1990

TOP PRODUCER

LARGE INTERNATIONAL CLIENT BASE

BILINGUAL - HABLO ESPAÑOL

OVER 25 YEARS EXPERIENCE



Cell: (305) 785-0440

lydia@lydiaeskenazi.com
www.lydiaeskenazi.com

GOLDENBEACHPROPERTIES.COM

HARDING REALTY, INC. 9588 HARDING AVENUE | SURFSIDE, FL 331354 (305) 785-0440



**GOLDEN BEACH RESIDENT
SINCE 1987**

**Selling Miami Beach
from South Beach to Golden Beach**

Licensed as a Broker with Coldwell Banker
in Florida and Illinois
Licensed in Florida since 1990

(305) 937-0789

Brenda.McHugh@ColdwellBanker.com

Special Children's Charities board member
A portion of every transaction benefits Special Olympics



1682 Jefferson Avenue Miami Beach, FL 33139

Operated by a subsidiary of NRT LLC.



**SERVING ALL YOUR
REAL ESTATE NEEDS**

**TRUST
COMMITMENT
RESULTS**

Real Estate Law
Business Law
Foreclosure Services
Mortgage Law
Debt Settlement &
Negotiation
Family Law
Wills, Trusts &
Estate Planning
Criminal Law

JACQUELINE A. SALCINES
ATTORNEY AT LAW

706 SOUTH DIXIE HIGHWAY, SECOND FLOOR
CORAL GABLES, FLORIDA 33146

305.669.5280

salcineslaw.com

www.goldenbeach.us

Golden **BEACH** IMPORTANT NUMBERS

POLICE-FIRE-EMERGENCY: **911**

REPORT CRIME – SUSPICIOUS ACTIVITY: **305.935.0940**

FIRE (NON-EMERGENCY): **786.331.5000**

TOWN HALL: **305.932.0744**

MAYOR GLENN SINGER: **305.932.0744** **GSINGER@GOLDENBEACH.US**

TOWN MANAGER ALEXANDER DIAZ: **305.932.0744** ext. 224 **ALEXDIAZ@GOLDENBEACH.US**

TOWN CLERK LISSETTE PEREZ: **305.932.0744** ext. 238 **LPEREZ@GOLDENBEACH.US**

FINANCE DIRECTOR MARIA CAMACHO: **305.932.0744** ext. 228 **MCAMACHO@GOLDENBEACH.US**

POLICE CHIEF RUDY HERBELLO: **305.932.0744** ext. 233 **RHERBELLO@GOLDENBEACH.US**

BUILDING & ZONING DIRECTOR LINDA EPPERSON: **305.932.0744** ext. 222 **LEPPERSON@GOLDENBEACH.US**

PUBLIC WORKS DIRECTOR KIRK MCKOY **305.932.0744** ext. 235 **KMCKOY@GOLDENBEACH.US**

RESIDENT SERVICES DIRECTOR MICHAEL GLIDDEN **305.932.0744** ext. 245 **MGLIDDEN@GOLDENBEACH.US**

HOME CHEMICAL COLLECTION CENTER: WEST MIAMI-DADE LOCATION: **305.468.5900**

POLICE ADMINISTRATION: **305.936.2444**

NORTH MIAMI BEACH WATER DEPARTMENT
(WATER SERVICES PROVIDER FOR GOLDEN BEACH): **305.948.2960**

NORTH MIAMI BEACH AFTER HOURS/
EMERGENCY WATER SERVICE: **305.652.6460**

MIAMI-DADE WATER & SEWER (EMERGENCY): **305.274.9272**

FLORIDA POWER & LIGHT (FPL): **305.442.8770**

CALL BEFORE YOU DIG: **811**

GATE HOUSE: **305.935.0940** TECO GAS: **305.940.0139**



ONE GOLDEN BEACH DRIVE | GOLDEN BEACH, FLORIDA 33160