

**Town of Golden Beach
One Golden Beach Drive
Golden Beach, FL 33160
Phone 305-932-0744
Fax 305-933-3825
www.Goldenbeach.us**

PROPOSAL BID FORM

RFP # 2022-001 Civic Center Furniture & Equipment

Therefore, the undersigned, Hereinafter called the proposer, hereby certifies that he/she has familiarized himself/herself with the extent of the work, and having examined carefully the specifications herein, propose to furnish all the labor, materials and services, without exception, for the furniture & equipment Design Services.

Proposed cost, in figures and in words. \$ 160,611.27 Total

In Figures

\$One hundred sixty thousand six hundred eleven Dollar and 27 cents

In Words

Time for completion, after Notice to Proceed 60-120 days



Company Name (please print) Authorized Signature

Town of Golden Beach

RFP # 2022-001 CIVIC CENTER FURNITURE & EQUIPMENT



Table of Contents

Section 1 – Cover Letter

Section 2 – Company Profile

Section 3 – Account Management Team

Section 4 – Corporation Overview

Section 5 – Product Presentation

Section 6 – Warranties



Section 1

COVER LETTER

November 3, 2022

Town of Golden Beach
Attn: Town Clerk
One Golden Beach Drive
Golden Beach, Florida 33160

RE: RFP #2022-001 Civic Center Furniture and Equipment

Dear Town Clerk:

Compass Office Solutions thanks you for the opportunity to provide our proposed furniture solutions for your new Town Civic Center.

We have developed our proposal based on our suggestion for the best value for the investment in your new facility. This is not a low bid solution; it is the best option for the long-term investment of the Town of Golden Beach. All products are covered under the HNI Family Lifetime Warranty. We have included the warranty in the presentation.

Per the RFP we have included:

- a) Experience - Our Presentation includes and summary of our dedicated team for your project, the pertinent experience and the Interior Design License for the design department.
- b) Lead Times - The current lead time for the vast majority of the products is 3-4 weeks and 5-6 weeks. Only a few of the lounge chairs and sofas have a longer lead time.
- c) Methodology and Design Aesthetic
 - a. For this project we suggest consolidating all of the Town's purchasing power into one factory: HNI Corporation. This will simplify the finish selection process, streamline the freight and delivery process, and provide a lifetime warranty for all products.
 - b. We will be implementing CET design software to allow visualization of each product in the respective finishes and Live Design to communicate and implement any changes.
 - c. See rendered images in the enclosed presentation. Color selections are for presentation purposes only. Actual colors will be selected by the Town representative with the assistance of our licensed interior design team.
- d) References - See attached reference document for similar municipal projects.
 - a. In addition, Mr. Al Paruas, past Vice Mayor and Councilperson at the Town of Golden Beach (305.335.9194), can serve as a personal reference for our corporate capabilities and commitment to our clients.
 - b. Additional references available upon request.
- e) Total Price -See enclosed form.
- f) Financial Resources – Fully capable; see attached presentation. Additional financial information available upon request.
- g) Location – We are located in Hollywood, just 6.4 miles from your project location.
- h) Completeness - See attached presentation.

Compass
A Better Way

3320 Enterprise Way
Miramar, Florida 33025-3939

Tel (954) 430 4590
Fax (954) 430 4591

Our presentation outlines the team and resources we have assembled to service your municipality for a flawless initial project and ongoing service for the life of your facility.

- We included on-site coordination with your professional services team, your selected contractor regarding all construction aspects of the new space affecting the furniture, and on-site logistics needed for delivery and installation in the new space.
- All plans, coordination of the order, delivery, and installation of all new furniture needed to complete the new offices per the schedule provided.
- Complete removal of all packing materials.
- Punch list resolution and ongoing warranty service.
- **Compass Lifetime Guarantee** - In addition to the manufacturers' product warranties, Compass warrants the installation to be performed per plan and manufacturers' installation requirements, free of defects for the life of the installation.

We look forward to earning the privilege of working with you and your team.



3320 Enterprise Way
Miramar, Florida 33025-3939

Tel (954) 430 4590
Fax (954) 430 4591

Regards,

A handwritten signature in blue ink, appearing to read "José Manuel Díaz".

José Manuel Díaz
Principal



Section 2

COMPANY PROFILE

Compass Office Solutions

COMPANY PROFILE

COMPASS OFFICE SOLUTIONS | 11.08.22



A BETTER WAY

Compass Office Solutions is a team of community-centric professionals dedicated to guiding our customers to the best solution to their business environment needs.

Compass has revolutionized the South Florida commercial dealer market by designing an outsource business model that dedicates all resources to client requirements and eliminates costly, inflexible, fixed overhead cost that inflate prices paid by our client while contributing little to the client's business.

Therefore, at any one time we employ 20-60 Compass-certified project management, warehousing, delivery and installation personnel from our five regional warehouses to position the "right" resource at the "right" price to address the need of our client. Our internal team manages these resources exclusively to your project requirements and to insure Compass quality standards.

We chose HNI as our primary manufacturing partner 16 years ago and are the second largest representative in the State of Florida.

COMPANY PROFILE

Compass Office Solutions

COMPANY PROFILE

COMPASS OFFICE SOLUTIONS | 11.08.22



CONTINUOUSLY EVOLVING

Compass Office Solutions is a leading full-service office furniture and modular demountable wall provider. Established in 2006 by a team of industry veterans Bill White and Jose Diaz, Compass has become a leader in providing office furnishings and environments. We are currently growing our for the clients we serve in South Florida, throughout the USA, and internationally by providing technical design, project management, installation, reconfiguration, floor coverings, modular interior demountable walls, and service.

Compass has serviced the Global needs of American Express, World Fuel, Costa Farms, Pacific National Bank, Total Bank, Quirch Foods, Walton and Post, Bacardi USA and many others since 2006.

COMPASS OFFERINGS

- Office Furnishings
- Accessories
- Prefabricated Interior Construction Solutions
- Demountable Floor to Ceiling Walls
- Carpet / Flooring
- Project Management
- Move Management
- Maintenance
- Liquidation
- Expert Coordination with Architects, Designers and Other Trades

COMPANY PROFILE



Section 3

ACCOUNT MANAGEMENT TEAM

Compass Team

YOUR DEDICATED ACCOUNT MANAGEMENT TEAM



JOSE DIAZ

*Primary Contact
Principal*

Primary Responsibilities:
Overall responsibility for account. Finance and operational responsibilities, customer interface and Compass project team leader.

Industry Experience:
35 years



BILL WHITE

Principal

Primary Responsibilities:
Finance and operational responsibilities, customer interface and Compass project team leader.

Industry Experience:
31 years



ARELIS FERRO

Director of Design

Primary Responsibilities:
Overall responsibility of design team. Furniture plans and specifications, project documentation, client presentations & finish selections.

Industry Experience:
16 years



CRYS FARR

Project Manager

Primary Responsibilities:
Design project management, internal coordination, review of installation drawings, project liaison; onsite installation management.

Industry Experience:
33 years

Project Management

UNIQUE QUALITIES

PROJECT MANAGEMENT

Expert project management is key to the success of complex interiors projects. Compass Project Managers are skilled coordinators, facilitators and problem solvers. They identify issues before they become obstacles and assume responsibility for all aspects in which Compass is involved to ensure that projects are completed to the client's satisfaction, on-time and on-budget.

Our phased Project Management Process provides professional management at every stage of a project, from pre-bid documentation through installation and post-occupancy evaluation. Clients can access some or all project management services on a project-by-project basis, as needed. A dedicated project manager follows a project from beginning to end to ensure continuity and accountability.



ACCESSIBILITY

Compass Office Solutions prides itself on customer connectivity and engagement, and we believe that engagement by the Compass leadership team demonstrates to the Town of Golden Beach that we are serious about being your partner, not just winning your business. Our approach to direct engagement should give the Town of Golden Beach the confidence that every member of our organization is committed to helping you achieve your unique business objectives, every step of the way and regardless of title.





Section 4

CORPORATION OVERVIEW

Corporation Overview

HNI CORPORATION IS THE WORLD'S SECOND LARGEST PRODUCER OF WORKPLACE SOLUTIONS.

HNI Corporation is a family of leading brands providing products and services for the office and home. With deeply held values, our employees, who we call members, are united by a dedication to integrity, quality, innovation, service, continuous improvement and value creation for our customers.

Our values distinguish us in the way we look at things and the way we work. Driving our success is a set of unique and strongly aligned principles and processes enthusiastically shared by our members. It defines our distinctive personality, and stands at the center of our corporate vision.

HNI Corporation's decentralized "split and focus" philosophy means each company is structured to meet the needs of highly specific marketing channels and end user segments. We can leverage the assets provided by HNI Corporation, such as procurement, information technology, logistics, and manufacturing best practices, while focusing on being a leading provider of premium office furniture in the contract market.

HNI CORPORATION IS PUBLICLY TRADED ON NYSE UNDER THE SYMBOL HNI



HNI Corporation

HON.

Gunlocke®



HBF
TEXTILES

Allsteel®



HNI Lamex̄



EUROPEAN PARTNERSHIP

Nowy Styl Group



About HNI Corporation

FINANCIAL STABILITY

HNI Corporation is a publicly traded organization on the New York Stock Exchange. In fiscal 2018, the Corporation had net sales of \$2.3 billion, of which approximately \$1.7 billion or 76% was attributable to office furniture products and \$0.6 billion or 24% was attributable to hearth products.

Our product development efforts create end-user solutions that are relevant, differentiated, and focused on quality, aesthetics, style, sustainable design, and reducing manufacturing costs. We also continuously improve and enhance existing products through ergonomic research, improved manufacturing processes, alternative materials, and engineering support and training in each of our operating units.

The Corporation invested approximately \$33.4 million, \$31.8 million and \$28.1 million in product development during fiscal 2018, 2017 and 2016, respectively.

HNI incorporates a group of strong performing companies with a shared purpose. Each company – including Allsteel, Gunlocke, HBF, HON, Lamex, and HNI India – is aimed at a distinct set of customer needs, but all are united by a common member culture, operational code and leadership philosophy. In this way, we give our diverse customers unparalleled focus along with the benefits of our scale and scope.

HNI is focused on building relationships by delivering solutions that reflect innovations, quality, integrity and continuous improvement. The “member/owner” culture provides the foundation of HNI’s distinctiveness and success, thus reflecting the strength, performance and value of the corporation.

Although HNI operates under a split and focus strategy, we can leverage these assets while focusing on being the leading provider of private office furniture in the contract market.

Sustainable Practices

DESIGN FOR THE ENVIRONMENT

We pursue positive change with a simple, clear purpose to make things better every day. Our commitments to lean manufacturing, responsible sourcing and distribution, reduction of material waste and emissions, and environmentally-conscious product development serve as the foundation of our sustainable program and help guide our actions.



We've been working to make our products healthier by evaluating the chemicals in our materials. We've achieved Cradle to Cradle Certified™ Bronze for several of our products, which contributes to both LEED and WELL certification.



Our products are Indoor Advantage™ Gold certified for low indoor air emissions, and contribute to a healthier indoor environment.



HNI's portfolio of fabrics and finishes can be used to select finishes that not only create a beautiful, inviting space, but also one that incorporates nature's patterns, boosting positive feelings and nurturing the human-nature connection.



Because we know the importance of independent verification, we participate in a number of third-party certifications.



Wellness

DESIGN FOR THE ENVIRONMENT



Wellness goes beyond fitness, and should support total worker health and all aspects of life that affect workers mental and physical state including: proper nutrition, adequate activity levels, community connectedness, financial stability, and psychological health.

Encouragement and development of employees to enrich all these important areas may create a workforce that is able to present, energized, and committed to work. Research has suggested that each dollar invested in wellness can yield a return of \$1.50. HNI can help to address wellness initiatives supporting the WELL Building Standard.





Section 5

PRODUCT PRESENTATION

COMPASS OFFICE SOLUTIONS | 11.08.22



Furniture Overview

200 | RECEPTION



RECEPTION DESK | RZ3

TASK CHAIR | Ignition 2.0

LOUNGE SEATING | Mav High Back Single Fabric with Arms and Wood Base

OCCASIONAL TABLE | Scramble Round Coffee Table



Furniture Overview

201 | BUILDING DEPARTMENT



CASEWORK | Concinnity with O-Leg + Accelerate Panel

TASK CHAIR | Ignition 2.0

MEETING TABLE | Preside

MEETING CHAIR | Cliq



Furniture Overview

202 | BUILDING DEPARTMENT DIRECTOR'S OFFICE



CASEWORK | Concinnity with O-Leg

TASK CHAIR | Ignition 2.0

GUEST CHAIR | Ignition Multipurpose Stacking



Furniture Overview

203 | CHIEF



CASEWORK | Concinnity with O-Leg

TASK CHAIR | Ignition 2.0

GUEST CHAIR | Ignition Multipurpose Stacking

LOUNGE SEATING | Evergreen



Furniture Overview

205 | CHIEF EXECUTIVE ASSISTANT

COMPASS OFFICE SOLUTIONS | 11.08.22



PRODUCT PRESENTATION

CASEWORK | Concinnity with O-Leg

TASK CHAIR | Ignition 2.0

GUEST CHAIR | Ignition Multipurpose Stacking



Furniture Overview

208 | POLICE CIRCULATION



MEETING TABLE | Preside

MEETING CHAIR | Cliq



PRODUCT PRESENTATION

Furniture Overview

212 | LT. 1 OFFICE

COMPASS OFFICE SOLUTIONS | 11.08.22



PRODUCT PRESENTATION

CASEWORK | Concinnity with O-Leg

TASK CHAIR | Ignition 2.0

LOUNGE SLEEPER | Evergreen



Furniture Overview

213 | LT. 2 OFFICE

COMPASS OFFICE SOLUTIONS | 11.08.22



PRODUCT PRESENTATION

CASEWORK | Concinnity with O-Leg

TASK CHAIR | Ignition 2.0

GUEST CHAIR | Ignition Multipurpose Stacking



Furniture Overview

214 | DETECTIVE

COMPASS OFFICE SOLUTIONS | 11.08.22



CASEWORK | Concinnity with O-Leg

TASK CHAIR | Ignition 2.0

GUEST CHAIR | Ignition Multipurpose Stacking



PRODUCT PRESENTATION



Furniture Overview

215 | ACCREDIDATION

COMPASS OFFICE SOLUTIONS | 11.08.22



PRODUCT PRESENTATION

CASEWORK | Concinnity with O-Leg

TASK CHAIR | Ignition 2.0

GUEST CHAIR | Ignition Multipurpose Stacking



Furniture Overview

223 | DIRECTOR OFFICE 2

COMPASS OFFICE SOLUTIONS | 11.08.22



PRODUCT PRESENTATION

CASEWORK | Concinnity with O-Leg

TASK CHAIR | Ignition 2.0

GUEST CHAIR | Ignition Multipurpose Stacking



Furniture Overview

223 | DIRECTOR OFFICE 2

COMPASS OFFICE SOLUTIONS | 11.08.22

PRODUCT PRESENTATION



CASEWORK | Concinnity with O-Leg

TASK CHAIR | Ignition 2.0

GUEST CHAIR | Ignition Multipurpose Stacking



Furniture Overview

224 | CODE ENFORCEMENT

COMPASS OFFICE SOLUTIONS | 11.08.22



PRODUCT PRESENTATION

CASEWORK | Concinnity with O-Leg

TASK CHAIR | Ignition 2.0

GUEST CHAIR | Ignition Multipurpose Stacking



Furniture Overview

225 | HR DIRECTOR

COMPASS OFFICE SOLUTIONS | 11.08.22



PRODUCT PRESENTATION

CASEWORK | Concinnity with O-Leg

TASK CHAIR | Ignition 2.0

GUEST CHAIR | Ignition Multipurpose Stacking



Furniture Overview

226 | FINANCE OFFICE 2

COMPASS OFFICE SOLUTIONS | 11.08.22



PRODUCT PRESENTATION

CASEWORK | Concinnity with O-Leg

TASK CHAIR | Ignition 2.0

GUEST CHAIR | Ignition Multipurpose Stacking



Furniture Overview

228 | COUNCIL MEETING

COMPASS OFFICE SOLUTIONS | 11.08.22

PRODUCT PRESENTATION



MEETING TABLE | Preside

MEETING CHAIR | Ignition 2.0



Furniture Overview

229 | DIRECTOR OFFICE 3



COMPASS OFFICE SOLUTIONS | 11.08.22

PRODUCT PRESENTATION

CASEWORK | Concinnity with O-Leg

TASK CHAIR | Ignition 2.0

GUEST CHAIR | Ignition Multipurpose Stacking



Furniture Overview

232 | FINANCE DIRECTOR

COMPASS OFFICE SOLUTIONS | 11.08.22



PRODUCT PRESENTATION

CASEWORK | Concinnity with O-Leg

TASK CHAIR | Ignition 2.0

GUEST CHAIR | Ignition Multipurpose Stacking

STORAGE | Brigade 800 4-Drawer Lateral with Laminate Top



Furniture Overview

234 | GOVERNMENT CIRCULATION

COMPASS OFFICE SOLUTIONS | 11.08.22



PRODUCT PRESENTATION

CASEWORK | Concinnity with O-Leg

TASK CHAIR | Ignition 2.0



Furniture Overview

235 | TOWN CLERK

COMPASS OFFICE SOLUTIONS | 11.08.22

PRODUCT PRESENTATION



CASEWORK | Concinnity

TASK CHAIR | Ignition 2.0

GUEST CHAIR | Ignition Multipurpose Stacking



Furniture Overview

236 | DIRECTOR OFFICE 1

COMPASS OFFICE SOLUTIONS | 11.08.22



CASEWORK | Concinnity with O-Leg

TASK CHAIR | Ignition 2.0

GUEST CHAIR | Ignition Multipurpose Stacking

STORAGE | Brigade 800 2-Drawer Lateral with Laminate Top



PRODUCT PRESENTATION



Furniture Overview

237 | RESIDENCE SERVICES

COMPASS OFFICE SOLUTIONS | 11.08.22



PRODUCT PRESENTATION

CASEWORK | Concinnity with O-Leg

TASK CHAIR | Ignition 2.0

GUEST CHAIR | Ignition Multipurpose Stacking

LOUNGE SEATING | Mav Mid Back Single Fabric with Arms and Wood Base

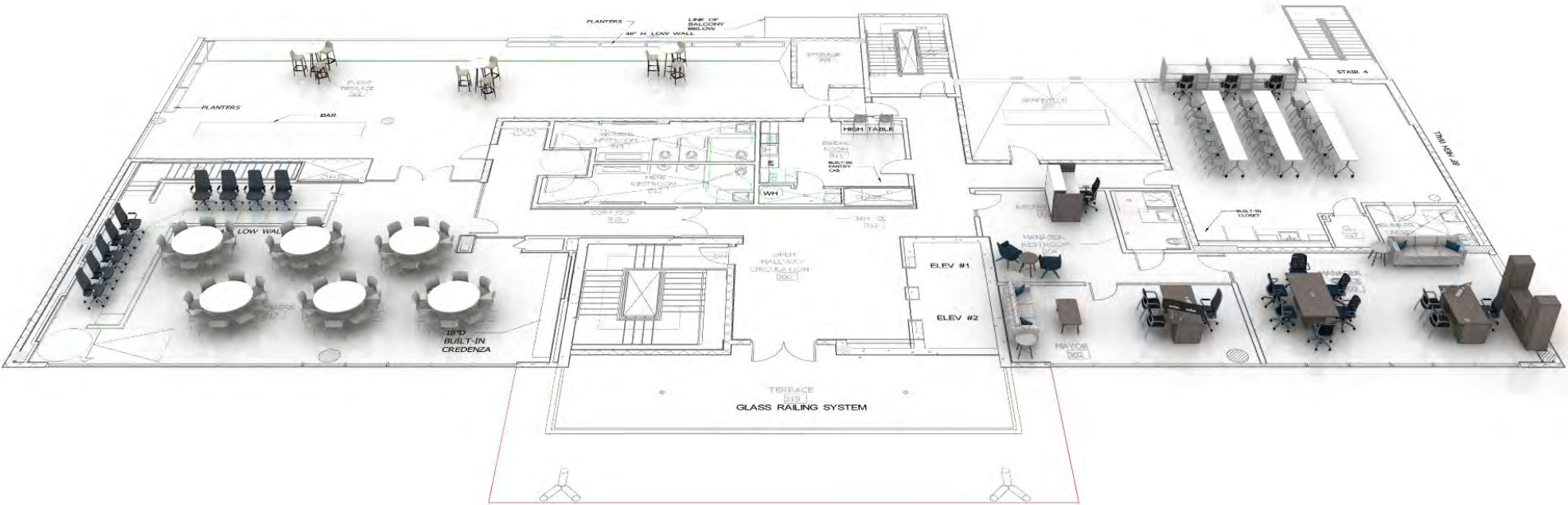
OCCASIONAL TABLE | Scramble Round End Table



Furniture Overview

OVERALL VIEW | 3RD FLOOR

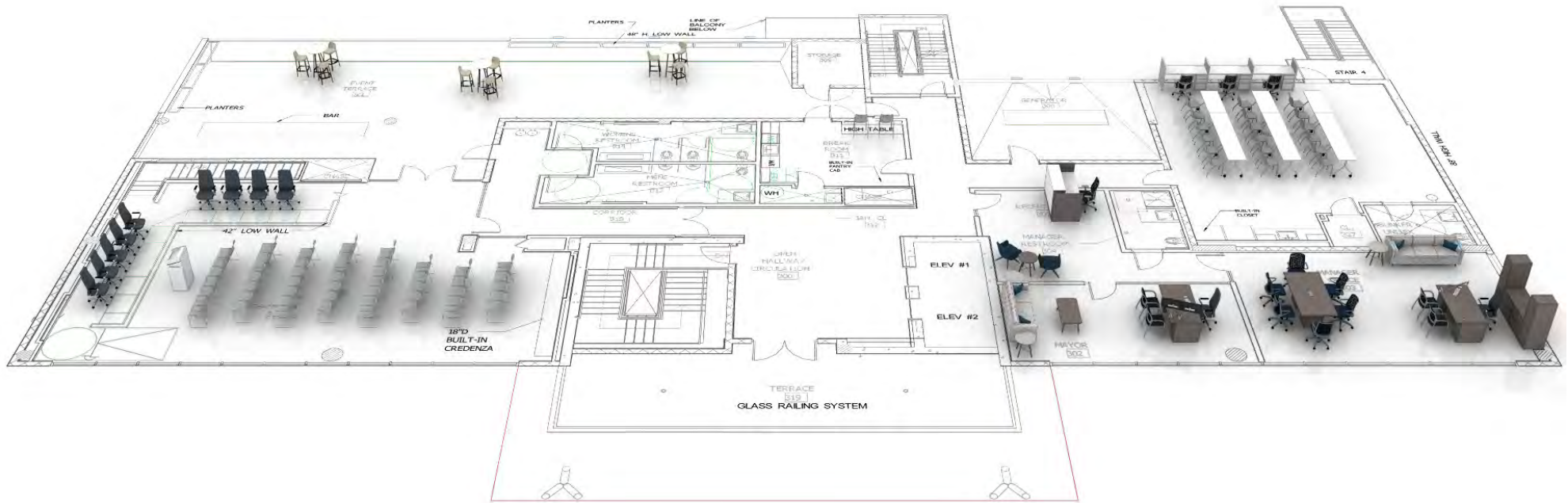
COMPASS OFFICE SOLUTIONS | 11.08.22



PRODUCT PRESENTATION

Furniture Overview

OVERALL VIEW | 3RD FLOOR



Furniture Overview

301 | RECEPTION



CASEWORK | 10500 + Concinnity

TASK CHAIR | Ignition 2.0

LOUNGE SEATING | Mav Mid Back Single Fabric with Arms and Wood Base

OCCASIONAL TABLE | Scramble Round End Table



Furniture Overview

302 | MAYOR

COMPASS OFFICE SOLUTIONS | 11.08.22



PRODUCT PRESENTATION

CASEWORK | Concinnity

TASK CHAIR | Cofi

GUEST CHAIR | Ignition Multipurpose Stacking

LOUNGE SEATING | West Hill

OCCASIONAL TABLE | Scramble Rectangle Coffee Table + Round End Tables



Furniture Overview

303 | MANAGER OFFICE

COMPASS OFFICE SOLUTIONS | 11.08.22



PRODUCT PRESENTATION

CASEWORK | Concinnity

TASK CHAIR | Cofi

GUEST CHAIR | Ignition Multipurpose Stacking

LOUNGE SEATING | West Hill

OCCASIONAL TABLE | Scramble Rectangle Coffee Table + Round End Tables

MEETING TABLE | Preside

MEETING CHAIR | Cliq



Furniture Overview

307 | BUNKER

COMPASS OFFICE SOLUTIONS | 11.08.22



PRODUCT PRESENTATION

MEETING TABLE | Between

MEETING CHAIR | Motivate 4-Leg with Casters

SYSTEMS | Accelerate

TASK CHAIR | Ignition 2.0



Furniture Overview

311 | BREAK ROOM



COUNTER STOOL | Motivate 4-Leg

Furniture Overview

317 | CHAMBERS

COMPASS OFFICE SOLUTIONS | 11.08.22



PRODUCT PRESENTATION

TASK CHAIR | Cofi

MEETING TABLE | Event 60" Round

MEETING CHAIR | Olson



Furniture Overview

317 | CHAMBERS

COMPASS OFFICE SOLUTIONS | 11.08.22



PRODUCT PRESENTATION

TASK CHAIR | Cofi

MEETING CHAIR | Olson

LECTERN | Preside



Furniture Overview

321 | EVENT TERRACE

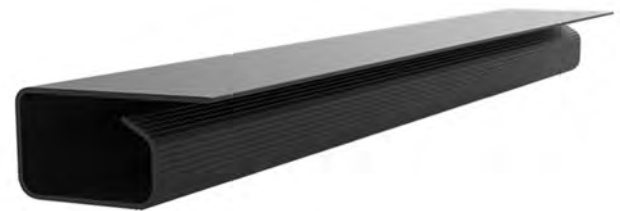
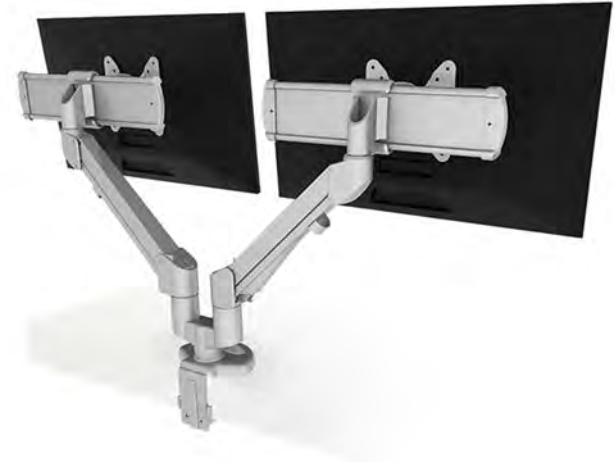


STOOL | Tapas

TABLE | Tapas

Furniture Overview

ACCESSORIES



SINGLE MONITOR ARM | Edge Max for All-in-One Computer

DUAL MONITOR ARM | Edge2 Motion Slider

POWER MODULE | Flex 4 + Power Strip

WIRE MANAGEMENT | Trough

Furniture Overview

ACCESSORIES



TASK LIGHTING | HON LED



Section 6

WARRANTIES

Warranties

HON

<https://www.hon.com/warranty>

ARTOPEX

<https://www.artopex.com/media/download/458072050>

ESI

<https://www.esiergo.com/product-terms-and-conditions/>

SAFCO

<https://www.safcoproducts.com/resources/warranty-statement>





Compass

Office Solutions

3320 Enterprise Way
Miramar, FL 33025

954.430.4590
www.compass-office.com

Thank You

REVISION HISTORY:	
REV	DATE
A	02-Nov-22
B	08-Nov-22

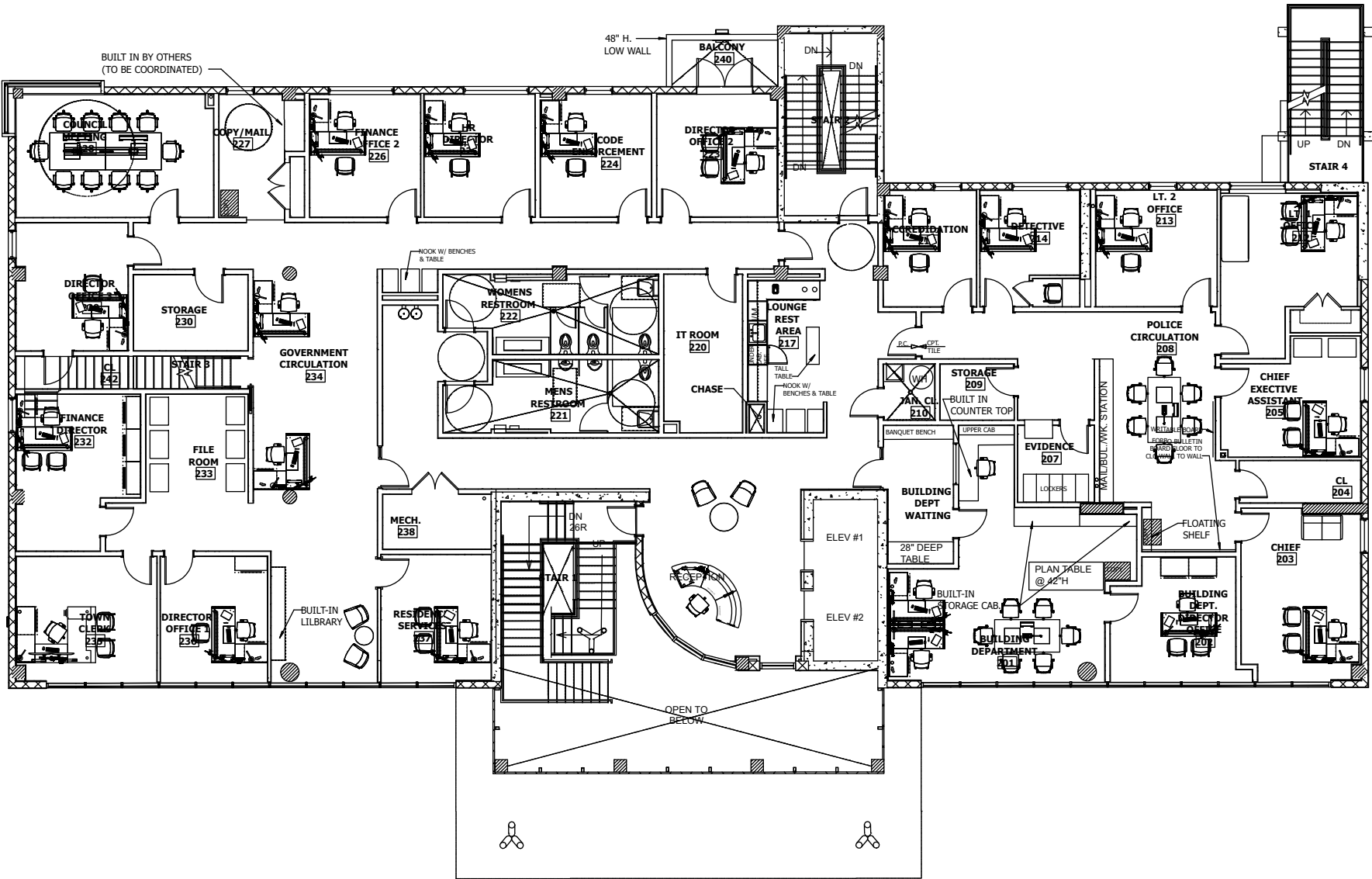
DISCLAIMER:
This is a furniture layout and/or installation drawing. It is not intended for construction. Clients are responsible for acquiring architects, engineers, and/or electricians as required by South Florida Building Codes. This document is the property of Compass Office Solutions and may not be reproduced without written consent from Compass Office Solutions.

Town of Golden
Beach

Civic Center - 2nd Floor

One Golden Beach Drive
2nd & 3rd Floors
Golden Beach, FL

DRAWING TITLE:	Furniture Plan
PROJECT NUMBER:	
ISSUED:	16-Nov-22
DRAWN BY:	Arelis Ferro
PROJECT MANAGER:	Crys Farr
DRAWING NUMBER:	F-100
SHEET NUMBER:	1/1



DISCLAIMER:

This is a furniture layout and/or installation drawing. It is not intended for construction. Clients are responsible for acquiring architects, engineers, and/or electricians as required by South Florida Building Codes. This document is the property of Compass Office Solutions and may not be reproduced without written consent from Compass Office Solutions.

One Golden Beach Drive
2nd & 3rd Floors
Golden Beach, FL 33160

SHEET NUMBER:
1/1

