

**TOWN OF GOLDEN BEACH, FLORIDA**

**RESOLUTION NO. 3019.25**

**A RESOLUTION OF THE TOWN COUNCIL OF THE TOWN OF GOLDEN BEACH, FLORIDA, AUTHORIZING THE PURCHASE AND EQUIPPING OF ONE FLUID PATROL 29 VESSEL, MERCURY MOTORS AND TRAILER AND THE USE OF GENERAL FUNDS TO PURCHASE AND EQUIP THE VESSEL ; PROVIDING FOR IMPLEMENTATION; PROVIDING FOR AN EFFECTIVE DATE.**

**WHEREAS**, the Town desires to purchase One Fluid Patrol 29 Vessel for the Golden Beach Police Department in order to continue to provide service to the residents of Golden Beach; and

**WHEREAS**, the costs to the Town to purchase and equip a Fluid Patrol 29 Vessel is \$252,452.20 with equipment cost not to exceed \$2,547.80 purchase and installation for vessel and equipment total cost is \$255,000.00; and

**WHEREAS**, the Town Council desires to utilize General funds to pay for the vessel of the Golden Beach Police Department; and

**WHEREAS**, the Police Chief has recommended that the \$255,000.00 cost be taken from the Town's General Fund; and

**WHEREAS**, the Town Council finds that it is in the best interest of the Town to proceed as indicated in this Resolution.

**NOW, THEREFORE, BE IT RESOLVED BY THE TOWN COUNCIL OF THE TOWN OF GOLDEN BEACH, FLORIDA, AS FOLLOWS:**

**Section 1. Recitals Adopted.** That each of the above-stated recitals is hereby adopted and confirmed.

**Section 2. Authorization of Approval.** The approval and execution of the purchase agreement of a Fluid Patrol 29, as described and outlined in the

Agenda Item Report attached and incorporated herein, is hereby authorized and approved.

**Section 3. Implementation.** That the Mayor and Town Manager are authorized to take any and all action which is necessary to implement this Resolution.

**Section 4. Effective Date.** That this Resolution shall be effective immediately upon adoption.

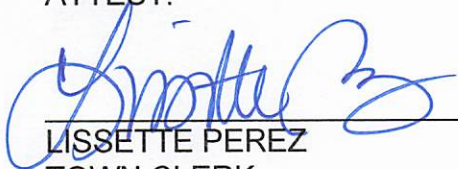
The Motion to adopt the foregoing Resolution was offered by Councilmember Mendal, seconded by Vice Mayor Lusskin and on roll call the following vote ensued:

Mayor Glenn Singer	<u>Aye</u>
Vice Mayor Judy Lusskin	<u>Aye</u>
Councilmember Bernard Einstein	<u>Aye via Zoom</u>
Councilmember Kenneth Bernstein	<u>Absent</u>
Councilmember Jessie Mendal	<u>Aye</u>

**PASSED AND ADOPTED** by the Town Council of the Town of Golden Beach, Florida, this 17th day of June, 2025.

  
\_\_\_\_\_  
MAYOR GLENN SINGER

ATTEST:

  
\_\_\_\_\_  
LISSETTE PEREZ  
TOWN CLERK

APPROVED AS TO FORM  
AND LEGAL SUFFICIENCY:

  
\_\_\_\_\_  
STEPHEN J. HELFMAN  
TOWN ATTORNEY



# TOWN OF GOLDEN BEACH

One Golden Beach Drive  
Golden Beach, FL 33160

---

## MEMORANDUM

---

**Date:** May 19, 2025

**To:** Alexander Diaz,  
Town Manager

**From:** Yovany Diaz  
Assistant Chief

**Subject:** Marine Patrol Vessel Recommendation

---

**Purpose:**

This memorandum outlines the recommendation for the acquisition of the Patrol 29 Rigid Inflatable Boat (RIB) from Fluid Watercraft to support Golden Beach Police Department's operational needs in marine patrol, search and rescue (SAR), and other high-demand maritime enforcements.

---

**Justification for Purchase:**

The Fluid Patrol 29 is specifically engineered for high-performance operations in demanding maritime environments. Designed by a team of former aeronautical engineers, the vessel is purpose-built for reliability, speed, and maneuverability key features essential to our mission success on the water.

**Key Features and Advantages:**

- **Durable Construction:**  
The Patrol 29's hull is made from a fiber-reinforced composite laminate, offering lightweight durability capable of withstanding extreme marine conditions.
- **Enhanced Performance:**  
Its unique hull shape and integrated high-powered motors enable fast response times, critical in time-sensitive patrol and rescue operations.

- **Operational Capacity:**  
With a load capacity of up to 4,001 pounds, the vessel can safely carry crew, passengers, and mission-critical equipment without compromising performance.
  - **Versatility:**  
This RIB is suitable for a range of operations including routine patrols, tactical deployments, SAR missions, and maritime law enforcement, making it a flexible asset for our fleet.
- 

**Recommendation:**

Based on its proven capabilities by Sunny Isles Police Department, Aventura Police Department and in alignment with our operational requirements, I recommend the approval and procurement of the Fluid 29 Patrol Vessel. This acquisition will enhance our maritime operational readiness and support safe, effective performance in both routine and extreme conditions.

---

Please let me know if additional information is required to move forward with the approval process.

Respectfully Submitted,



# TOWN OF GOLDEN BEACH

100 Ocean Boulevard  
Golden Beach, FL 33160

---

## MEMORANDUM

---

**Date:** June 17, 2025

Item Number:

**To:** Honorable Mayor Glenn Singer &  
Town Council Members

9

**From:** Alexander Diaz,  
Town Manager

*Alex B.*

**Subject:** Resolution No. 3019.25 – Authorizing the Purchase of One Fluid  
Patrol 29 Vessel and Trailer.

---

### Recommendation:

It is recommended that the Town Council adopt the attached Resolution No. 3019.25 as presented.

### Background:

Shortly after I began my tenure with the Town, Golden Beach purchased its current Marine Patrol boat to support our law enforcement and public safety operations on the water. While that vessel has served the Town well over the years, it has become increasingly clear that a replacement is both necessary and timely.

Golden Beach is a community uniquely surrounded by water—with three residential canals, the Intracoastal Waterway, and the Atlantic Ocean forming key parts of our geographical footprint. Ensuring our Police Department has modern, agile, and responsive marine capabilities is critical to maintaining public safety, responding quickly to emergencies, and upholding our commitment to excellence.

### Strategic Rationale

One of the core goals of the Golden Beach Police Department is to be the best equipped, best trained, and most responsive agency in South Florida. Replacing our aging vessel with a newer, more flexible, maneuverable, and easier-to-operate patrol boat will help us continue to meet that standard.

We are recommending the purchase of a modern Marine Patrol vessel, similar to those being operated by neighboring coastal municipalities and agencies. This vessel will:

- Enhance our marine response capability
- Reduce maintenance and operational strain
- Allow our officers to safely and efficiently navigate in all local waterways

**Marine Patrol Certification**

Golden Beach currently has more than 15 officers who are Marine Patrol certified. Each of them will benefit from the increased ease of use and operational efficiency offered by the proposed new vessel.

The Police Department is recommending the purchase of One Fluid Patrol 29 Vessel with Emergency Equipment and Trailer.

The Administration recommends that the Town Council approve the attached invoice for the purchase of a new Marine Patrol boat. This investment will replace the Town's existing vessel and significantly improve our marine enforcement capabilities.

If approved, the new boat will be placed into service promptly, and the current vessel will be evaluated for decommissioning or resale based on its condition and market value.

**Financial Impact:**

One Fluid Patrol 29 Vessel with Emergency Equipment and Trailer for a purchase price not to exceed \$255,000.00 from the current undesignated funds in the Fiscal Year 2024/2025 budget.





# Town Of Golden Beach - Patrol 29

Quote created: May 15, 2025 Reference: 20250515-125141867

**Town Of Golden Beach**

1 Golden Beach Drive  
Golden Beach, FL 33160  
United States

**Y. Diaz**

ydiaz@goldenbeach.us  
(305) 331-4491

This quote is for a Patrol 29 T-top boat with quoted custom accessories.

GSA boats can be purchased through our GSA partner, Phoenix Trading, GSA contract number:

47QMCA18D0006

We will connect you with the GSA POC, Mia Sethi,  
For any questions, please reach out to Troy Vezina.

	Quantity	Price	Total
<b>Fluid 29 Patrol Boat - T-Top GSA pricing</b>	1	\$199,227.20	\$199,227.20
<b>Patrol 29</b>			
Overall Length: 28'11"			
Length Inside: 25'11"			
Beam: 9'6"			
Beam Internal: 5'10"			
Tube Diameter 22"; 7 Chambers			
Weight Capacity: 4,647 Lbs.			
Person Capacity: 20 Persons			
<b>Hull and Deck</b>			
Heavy Duty Fiberglass Hull			
Aluminum Keel Guard			
Non-Slip Surface Molded into the Deck			
Gelcoat Color: Cloud Grey			
Stainless Steel Bow/Stern Eyes for Lifting or Towing			
Under-Deck Fuel Tank, 124 Gallons			
5" Stainless Steel High Flow Scupper			
Sealed Deck			
<b>Tubes</b>			
1670dtx Military Grade Hypalon Tubes			
Removable Tube Design (23'+)			
Inflation and Pressure Relief Valves			
Non-Slip Rubber Applied to Tubes			
Heavy-Duty EPDM Rubbing Strake			
Lifelines			
<b>Diving &amp; Rescue Equipment</b>			
Engine Crash Rail/Rope Guard			
Stainless Steel Bow Samson Post			
Stainless Steel Tow Post			
Tube Mounted Telescopic Swim Ladder			
Life Cell Safety Box and Insert			
Spine Board			
<b>Navigation and Safety</b>			
LED Navigation Lights (USCG 2nm)			
Two Courtesy Red Lights			
Fire Extinguisher and Insert			
Telescopic Boat Hook			
Automatic & Manual Bilge Pump			



	Quantity	Price	Total
Tube Repair Kit with Manual Inflation Pump			
<b>Engine and Drive System</b>			
Twin 250 hp Mercury or Honda Engines			
Racor Fuel/Water Separators			
Stainless Steel Propellers			
Digital Engine Display			
Analog Fuel Gauge			
<b>Law Enforcement Equipment</b>			
nROADS® Dome Light with Siren and Amplifier			
Strobe and Takedown Lights			
"POLICE" Lettering Painted on T-Top			
Rear Arch for LE System			
<b>Console</b>			
Fiberglass Console and Bolster			
Hydraulic Steering			
Built-in Storage and Safety Equipment			
Two Pop-up Cleats			
<b>Electronics</b>			
Raymarine Electronics:			
Raymarine Axiom+ 12			
Realvision 3D Transducer - Down/Side/3D CHIRP			
Closed dome radar with Doppler			
I70s instrument display			
Ray53 Compact VHF Radio			
<b>Electrical Accessories</b>			
3-bank Battery Charger			
12v Outlet			
USB Outlet			
<b>Storage</b>			
Aft Storage Box in Bolster			
Gun Cabinet with Timer Lock (1)			
Bow Locker			
<b>Weather Protection</b>			
Heavy-Duty Aluminum RAPTOR-Coated T-Top			
Full Impact Glass Windshield			
Windshield Wiper			
<b>Trailer</b>			
Aluminum Dual-Axle Trailer with Brakes			
<b>OPEN MARKET ITEM: Mercury Engine Upgrades</b>	1	\$4,000.00	\$4,000.00
225hp to 250hp			

	Quantity	Price	Total
<b>OPEN MARKET ITEM: Laptop &amp; Printer Kit</b>	1	\$1,500.00	\$1,500.00
Laptop Bracket			
Printer Bracket			
Power Inverter			
Power Outlet			
<b>OPEN MARKET ITEM: FLIR Thermal Camera</b>	1	\$4,470.00	\$4,470.00
Raymarine M232			
<b>OPEN MARKET ITEM: Dacon Rescue Frame</b>	1	\$3,400.00	\$3,400.00
<b>OPEN MARKET ITEM: Coast Key System for Twin Motors</b>	1	\$1,760.00	\$1,760.00
<b>OPEN MARKET ITEM: Decking - Patrol 29</b>	1	\$3,200.00	\$3,200.00
10mm (throughout) Color: Black			
<b>OPEN MARKET ITEM: Pop Up Cleats, Tube Mounted (Set of 2)</b>	1	\$1,500.00	\$1,500.00
Cleats on the tubes			
<b>OPEN MARKET ITEM: Cooler ring w/Cooler</b>	1	\$450.00	\$450.00
28QT Lifetime Cooler/Aluminum Fold-Up Ring			
<b>OPEN MARKET ITEM: Mercury Marine Joystick Control System</b>	1	\$26,000.00	\$26,000.00
Includes joystick control and all associate components.			
<b>OPEN MARKET ITEM: Hypalon POLICE Logo (pair)</b>	1	\$1,500.00	\$1,500.00
Hypalon POLICE Logo (Qty 2)			
<b>OPEN MARKET ITEM: Dive Tank Holder</b>	1	\$450.00	\$450.00
4Holders, 2 on each side.			
<b>OPEN MARKET ITEM: Shrink-Wrapping</b>	29	\$45.00	\$1,305.00
Shrink Wrap charge @ \$45/foot			
<b>OPEN MARKET ITEM: Delivery Charge</b>	820	\$4.50	\$3,690.00
Delivery to your location @ \$4.50/Mile			

One-time subtotal ..... \$252,452.20

Total ..... \$252,452.20

**This quote expires on July 14, 2025**

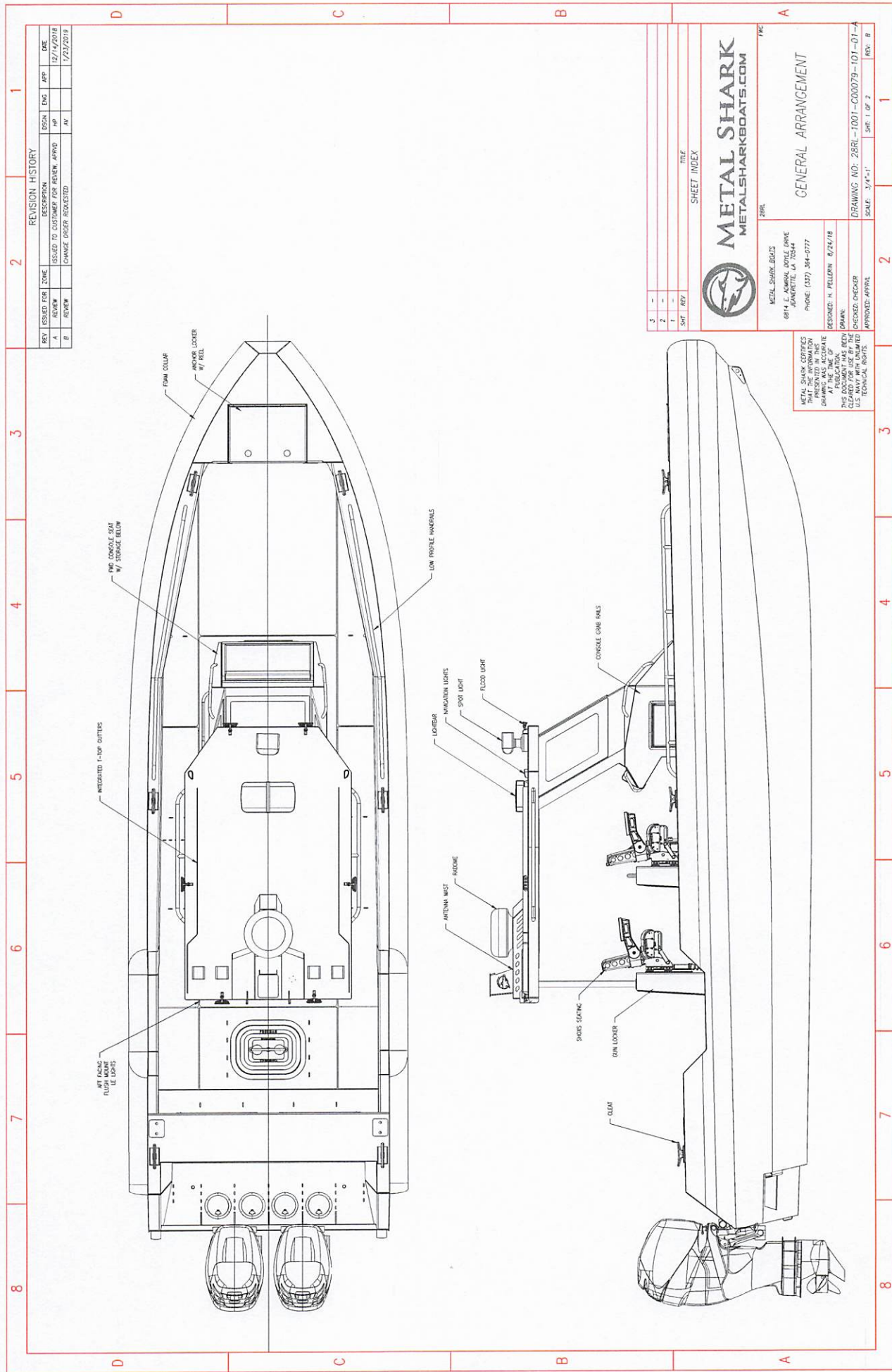
Terms: Agency buy terms are NET 30.

**Questions? Contact me**

**Troy Vezina**  
**troy@fluidboats.com**

**Fluid Marine**  
91 Volks Way  
Franklinton NC 27525  
United States





REVISION HISTORY				
REV	ISSUED FOR	ZONE	ISSN	DATE
A	ISSUED TO CUSTOMER FOR REVIEW	APPROV	APPROV	12/14/2018
B	CHANGE ORDER REQUESTED	APPROV	APPROV	1/17/2019

SHEET INDEX	
3	1
2	2
1	3
SHT	REV



**METAL SHARK**  
METALSHARKBOATS.COM

280L

METAL SHARK BOATS  
6814 E. ALABAMA BOULEVARD  
JEANERETTE, LA 70044  
PHONE: (504) 364-2777

DESIGNED: H. PELLERIN 8/24/18

DRAWN: [Signature]

CHECKED: [Signature]

APPROVED: [Signature]

GENERAL ARRANGEMENT

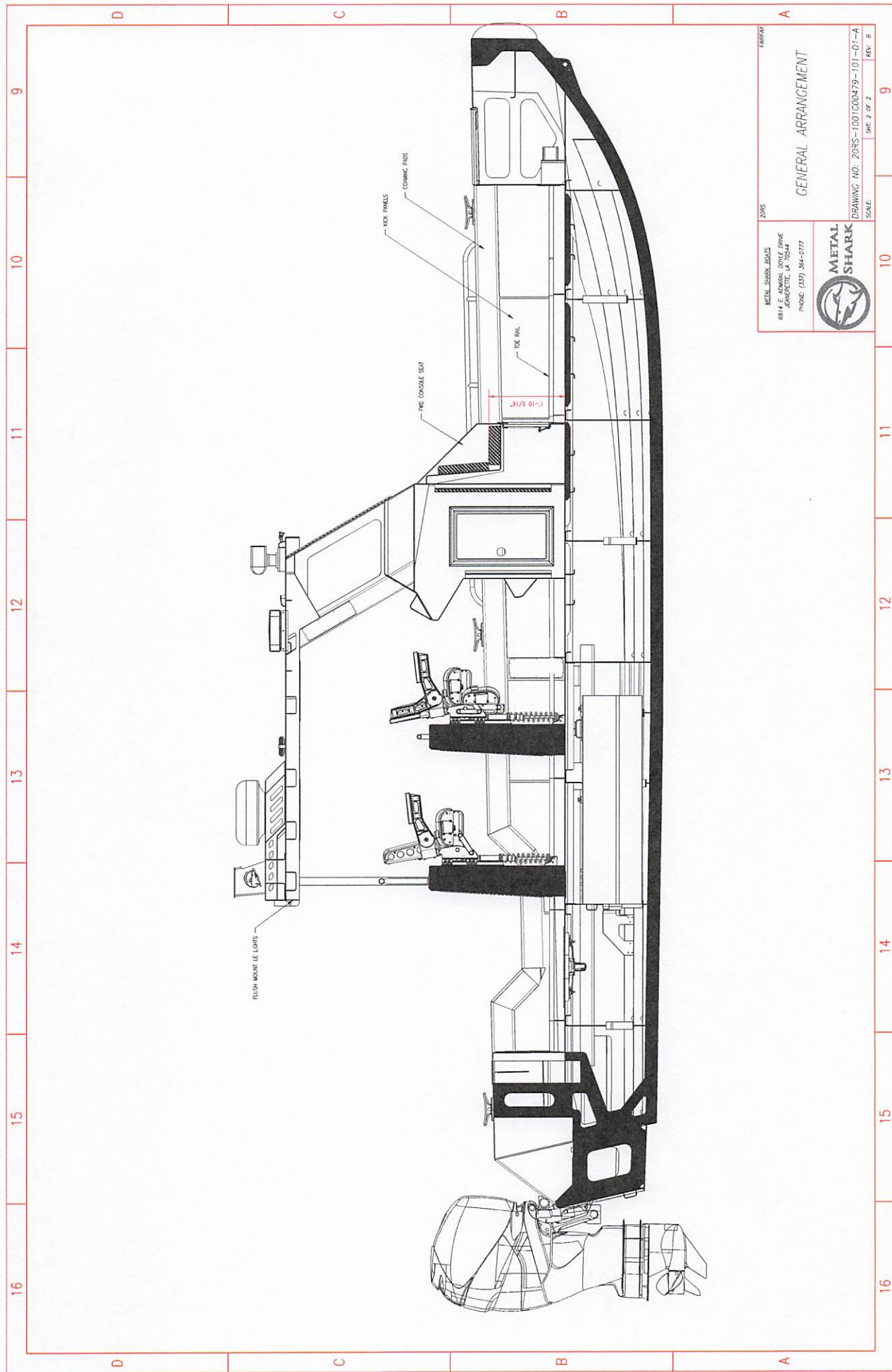
DRAWING NO. 280L-1001-C00079-101-01-A

SCALE: 3/4"=1'

SHEET 1 OF 2

REV: B

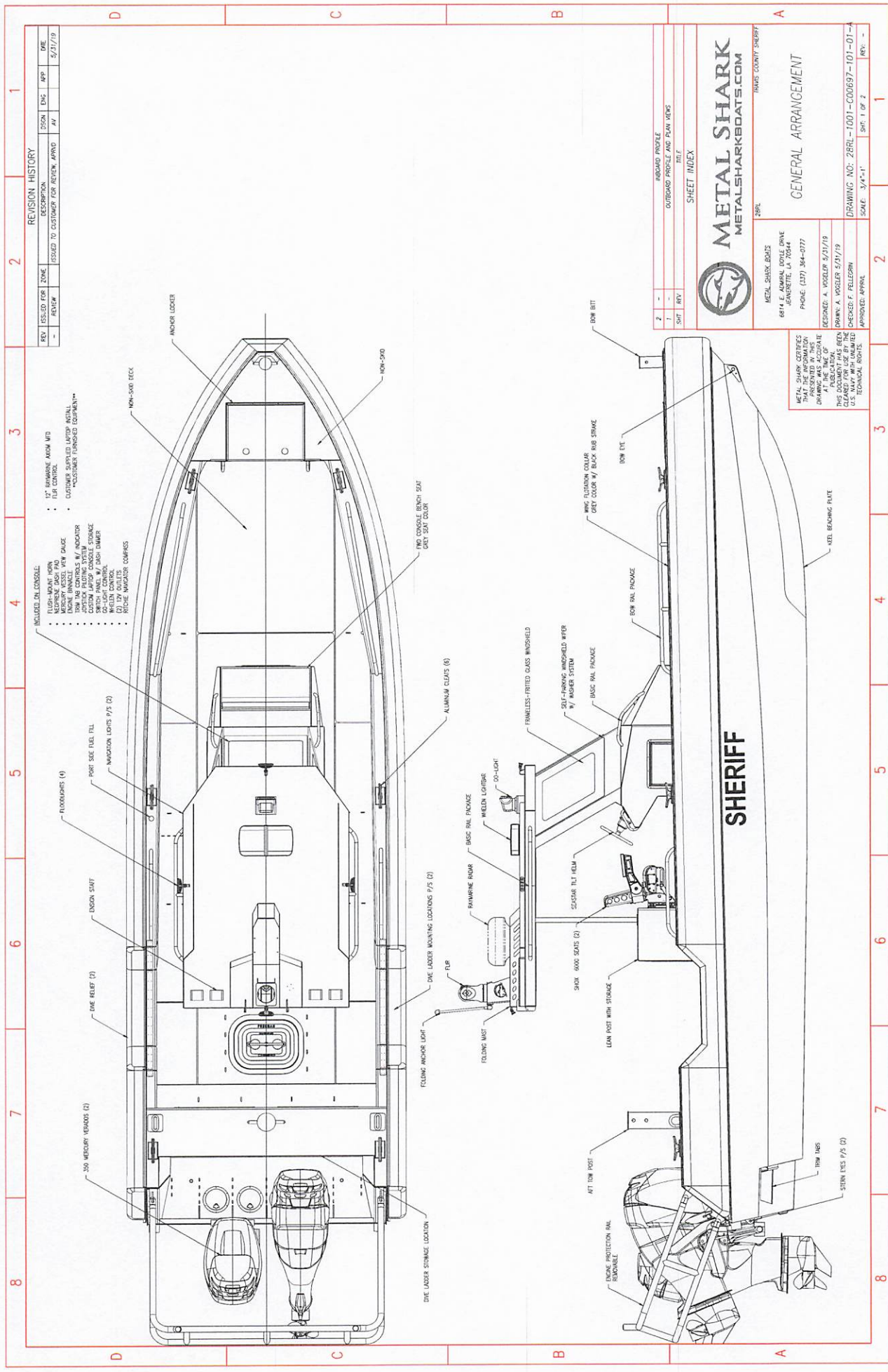
METAL SHARK CERTIFIES  
THESE DRAWINGS WERE  
PRESENTED IN THIS  
FORM AND TO THE  
BEST OF OUR KNOWLEDGE  
AND BELIEF THEY  
COMPLY WITH ALL  
U.S. NAVY REGULATIONS  
AND REQUIREMENTS.



<p>2095</p> <p>METAL SHARK BOATS</p> <p>6814 E. ADAMS DRIVE</p> <p>CONROE, TX 75844</p> <p>PHONE (281) 364-0777</p>		<p>GENERAL ARRANGEMENT</p>	
<p>DRAWING NO. 2095-1001C00479-101-01-A</p>		<p>SCALE: 1" = 2' 0"</p>	
<p>REV: B</p>		<p>SHEET 2 OF 2</p>	







REVISION HISTORY				
REV	USED FOR ZONE	ISSUED TO CUSTOMER FOR REVIEW	APP	DATE
1	REVISED	ISSUED TO CUSTOMER FOR REVIEW	APP	5/31/19

SHEET INDEX	
SHT	REV
1	1

**METAL SHARK**  
METALSHARKBOATS.COM

METAL SHARK BOATS  
6814 E. ADAMSON DRIVE  
JEANERETTE, LA 70044  
PHONE: (504) 364-0777

DESIGNED: A. VOGLER 5/31/19  
DRAWN: A. VOGLER 5/31/19  
CHECKED: F. FELLEGRINI  
APPROVED: APPROX.

DRAWING NO: 28RL-1001-C00697-101-01-1  
SCALE: 3/4"=1'  
SHEET 1 OF 2  
REV: -

METAL SHARK CERTIFIES  
THAT THIS DRAWING IS  
PRESENTED IN THIS  
FORM AND TO THE BEST  
OF OUR KNOWLEDGE  
AT THE TIME OF  
PUBLICATION  
THIS DOCUMENT HAS BEEN  
CLEARED FOR USE BY THE  
U.S. ARMY AND IS NOT  
A TECHNICAL DRAWING.







**Florida Fish and Wildlife  
Conservation Commission**

# **Metal Shark 28 Relentless Vessel Overview**



Metal Shark's Relentless Series patrol boats project the command presence of a purpose-built, mission-specific law enforcement patrol vessel. These well-balanced, versatile platforms have been specifically tailored to perform a diverse range of FWC missions including the enforcement of state and federal environmental laws, the enforcement of boating rules and regulations, securing ports and waterways, and responding to critical incidents in the diverse and expansive waters of Florida.

This document highlights specific features of the FWC version Metal Shark's 28-foot Relentless.





Florida Fish and Wildlife  
Conservation Commission

## Metal Shark 28 Relentless Vessel Overview



### 28 Relentless Specifications:

LOA:	28'
Outside Beam:	10'
Draft:	24"
Fuel Capacity:	165 US Gallons
Max HP:	750 HP (Multiple Outboard Brands Available)
Top Speed:	55+ MPH (with max power)

### 28 Relentless Key Features:

- Aluminum Construction - 25-Year Hull Life
- Collar: Urethane-Sheathed, 100% Closed-Cell Foam
- Fixed Glass Windscreen, Full Height
- Extended Aluminum Hard Top
- Electronics Storage in Dash, Flush
- Forward Console Seat, Padded
- Hullside Dive Reliefs (2)
- Helm Station, Starboard Side
- LED Lighting: Navigation Lights, Deck Lights, and Flood Lights (4)
- Locking Console-Integrated Laptop Storage
- Locking Weapons Storage (2)
- Multiple Lockable Dry Storage Compartments
- Shock-Mitigating Crew Seating for (4)
- Spotlight, Remote
- 12V Outlets



**Crew-Friendly Functionality:** Extended aluminum hard top and dash feature glare-reducing matte black finish. Full-height glass windshield provides superb protection and visibility. Shock-mitigating seating for four, multiple locking dry storage compartments, and 12-volt outlets add comfort and convenience.



**Configured for FWC's Mission:** 28 Relentless second-row shock-mitigating seats shown here. Gunnels feature heavy-duty foam padding and toe rails, and light gray cockpit nonskid and heat-mitigating paint add crew comfort. Port and starboard dive reliefs and integrated tank racks enhance mission capability.





Florida Fish and Wildlife  
Conservation Commission

## Metal Shark 28 Relentless Vessel Overview



### Custom Tailored to Enhance FWC's Mission Readiness:

- Industrial-grade aluminum construction boasts a 25-year hull life expectancy
- Metal Shark's certified Central Florida warranty and repair & refurbishment shop features mobile technicians providing 24-hour service and repair anywhere within the State of Florida.
- Aggressive Michael Peters deep vee hull design delivers superb high-speed maneuverability, outstanding sea keeping, and top speed of 55+ MPH.
- Large 100% foam collars mitigate potential damage to civilian vessels during boardings and safety checks while eliminating the need for multiple loose hanging fenders.
- Shock-mitigating drop-out seats are specifically designed for Law Enforcement use and feature widened seat cushions and adjustable folding armrests.
- Aluminum T-Top with extended length and width offers enhanced weather protection, with integrated rooftop rain channels designed to deflect water away from the crew.
- High-density foam gunnel pads, heat-mitigating paint, light gray seat cushions, and light gray non-skid floors are all designed to mitigate heat retention while withstanding the rigors of heavy Law Enforcement use.
- Grab rails have been strategically placed to maximize an officer's ability to quickly and safely move around the interior of the vessel at all times.
- Rounded toe rails have been incorporated into the cockpit sidewalls to enhance officer safety while conducting vessel stops in rough conditions.
- Multiple large, lockable dry storage compartments are provided for the secure storage of long weapons and for sensitive equipment.







Florida Fish and Wildlife  
Conservation Commission

## Metal Shark 28 Relentless Vessel Overview



### About the Manufacturer:

Metal Shark is a leading designer and manufacturer of government and commercial vessels from 16' to 300' in aluminum, steel, and fiberglass. One of America's most diverse builders, this financially stable, independently-owned business employs well over 500 employees including an in-house team of over 60 naval architects and maritime engineers.

From its three shipbuilding facilities in Louisiana and Alabama, Metal Shark produces nearly 200 boats per year. The company maintains an excellent past performance history with well over 1,000 vessels delivered to Law Enforcement, Fire Rescue, Military, and Commercial operators in over 50 countries worldwide since 1986.

Metal Shark has developed a serialized production process that documents each FWC vessel by hull number, cataloging all aluminum cut files, components, and subsystems. All systems and components are interchangeable across all vessels built for FWC, assuring complete fleet commonality.

Metal Shark has implemented an FWC-specific cross-platform standardization program, which ensures that console configurations and deck layout are identical, regardless of the size of the vessel, for total crew familiarity.

Delivery times for Metal Shark boats are 120-180 days from receipt of order.

